

PART OF THE SE.1/4, OF SECTION 19, T.7N., R.1E., S.L.B. & M.  
LIBERTY CREEK ESTATES PHASE 1

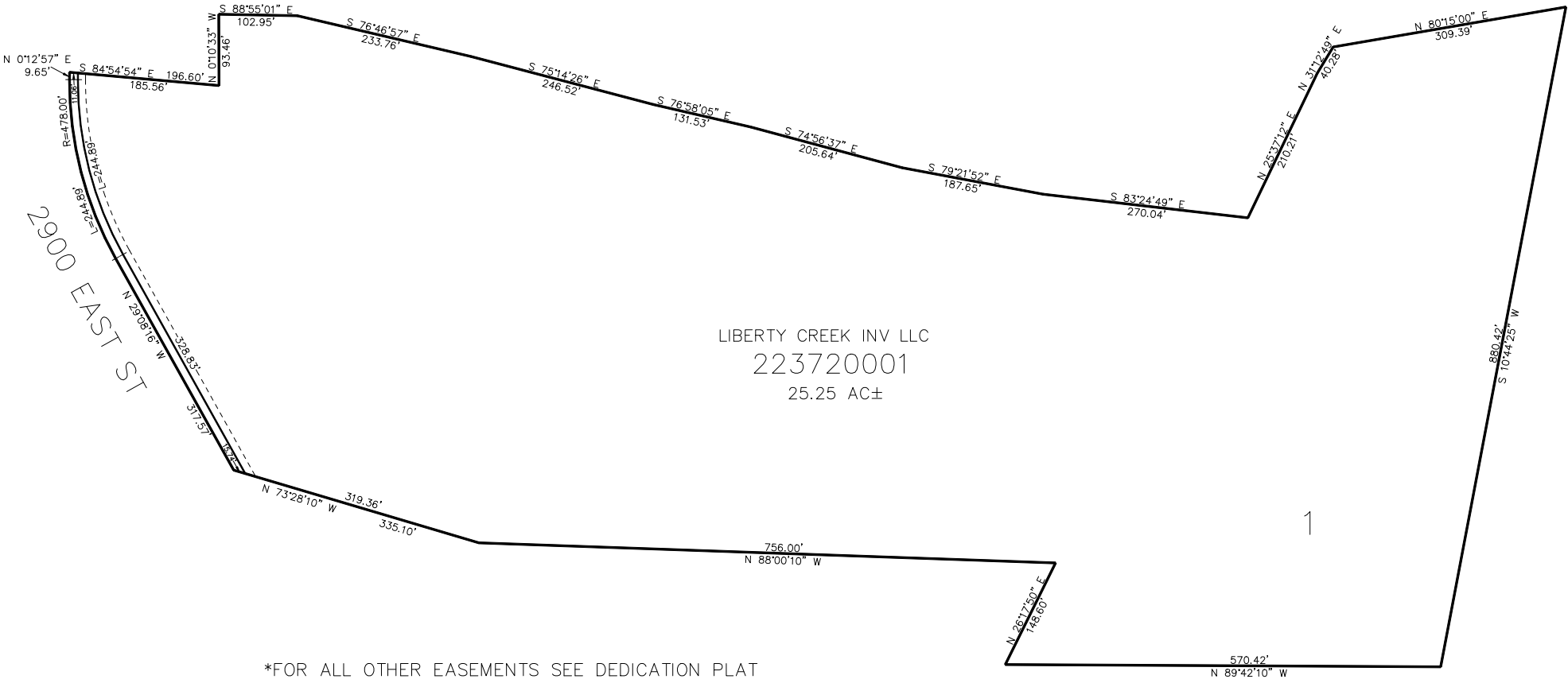
372

TAXING UNIT: 36

IN WEBER COUNTY  
SCALE 1" = 200'

SEE PAGE 9

SEE PAGE 9



SEE PAGE 9

SEE PAGE 9

10' UTILITY & DRAINAGE EASEMENTS EACH  
SIDE OF PROPERTY LINES AS INDICATED  
BY DASHED LINES EXCEPT AS OTHERWISE  
SHOWN.

FOR COMPLETE ENG DATA SEE  
ORIGINAL DEDICATION PLAT IN  
BOOK 86, PAGE 36 OF RECORDS.